



Gravity

Smart Campus

Sustainability Report

2022 - 2023

Foreword

Strategically located in the South West of the UK, Gravity is the UK's first commercial smart campus. From the outset, the project has been guided by a forward thinking, sustainable ethos embracing energy efficiency and catalysing the journey towards net-zero.

Creating a route to delivering clean and inclusive economic growth, Gravity has unrivalled connectivity to road, rail, international airports, and a deep seaport at Bristol. With access to world-class assets and a talent pool with expertise in innovation and clean growth sectors, Gravity is on a journey to become one of the most sustainable innovative campuses across Europe. It is establishing the foundation for accelerating and transforming growth whilst simultaneously cutting greenhouse gas emissions, creating good jobs, delivering low carbon homes, and realising positive social outcomes for local communities.

Historically, the site was a thriving employment hub with a strong community spirit. Gravity will rekindle this ethos through the development of a place that is continually evolving, providing jobs for tomorrow's workforce whilst minimising environmental impact through careful stewardship. Throughout Gravity's development, a commitment to creating high quality and high earning jobs and to developing long lasting environmental benefits has been central to the vision. These commitments are set out within Gravity's Clean and Inclusive Growth Strategy, and an

Environmental Social Governance (ESG) Policy. These keystone strategies guide priorities and focus areas as the project evolves and welcomes its first occupiers.

In 2021, Gravity published its first Sustainability Report, setting out progress against five priority investment areas defined during the project's initial stages:

1. Wellbeing and Inclusivity,
2. Clean Energy,
3. Natural Resources,
4. Clean Transport, and
5. Digital Revolution.

Providing a summary of Gravity's sustainability vision and initiatives, these 5 themes form the framework for our approach. Like many in our sector, we are continuing to learn of new ways to measure our impact. Our approach is to focus on outcomes, and to better reflect our aims and measures, we have adapted the themes set out in our previous report. With a continued focus on the UN Sustainable Development Goals (UN SDGs) as guiding principles, we introduce an additional theme in this report - Employment and Skills. Whilst closely aligned to the existing themes, this new theme allows a renewed focus on supply chain and employment opportunities, skills and commercial opportunities presented by the evolution of Gravity into implementation and delivery.

Looking Ahead

During 2024, Gravity welcomed Agratas as the first site occupier, a key milestone in the project. Where appropriate, we signpost initiatives that will transition to Agratas governance during the next reporting period.

“

This reporting period has seen the tangible, positive impact of the Gravity LDO, with the confirmation of the primary occupier. This must be one of the largest land/ property transactions in the South West and will have the ability to boost accelerated transition towards a lower carbon economy.”

*Tom Curtis
Co-Founder & CEO, Gravity*



Main entrance from south west corner (artist's impression)

Our approach to sustainability

Our mission is to create decent work and inclusive growth in conjunction with climate action, whilst contributing to the broader suite of UN Sustainable Development Goals. Through an approach that nurtures low carbon innovation, processes, and systems to enable future occupants and communities to share our aspirations, we will maximise the social, economic, and environmental benefits of the transition to a low carbon economy.

We have selected key UN SDGs that are specific to our mission and aims, and these are referenced through the report.

We anticipate that, on our delivery journey, the metrics of success are likely to change but our mission will continue to drive positive environmental and social outcomes.



Birds Eye View



Wellbeing & Inclusivity

Human centered investment decisions will drive the need for infrastructure, industrial growth and design. Our strategy will enable opportunities to achieve work-life blending with inclusive access to employment and training.



Clean Energy

Gravity goes beyond just embedding infrastructure to enable low and zero carbon energy use. Through investment into access to 'national' scale power infrastructure Gravity will become a centre for advancement in manufacturing and supply of clean growth technology.



Natural Resources

Focusing on natural capital enhancements that benefit people and planet, and investments into nature.



Clean Transport

Through linking the geographic benefits of energy and data infrastructure Gravity will create the stimulus to enable the transition to zero carbon movement.



Digital Revolution

Gravity will play a key role in enabling the South West to 'level up' in the digital economy creating jobs by attracting innovative forward thinking companies.

Governance of sustainability

The Gravity Board is responsible for the governance of sustainability, which is guided by an Environmental Social Governance (ESG) Policy, setting out commitments, and a Clean and Inclusive Growth Strategy that sets out 50 priorities aligned to the UK Industrial Strategy.

The Gravity LDO processes have defined governance arrangements for Gravity moving forward and one of those is an ESG Group with the mandate to steer and monitor progress against our Policies and strategies relating to environmental and social value measures. The ESG Group have an advisory and enabling role, ensuring the delivery of objectives and securing positive outcomes. As progress on site accelerates, the group meets every six months, reporting to the Gravity Enterprise Zone Sub-committee on progress.

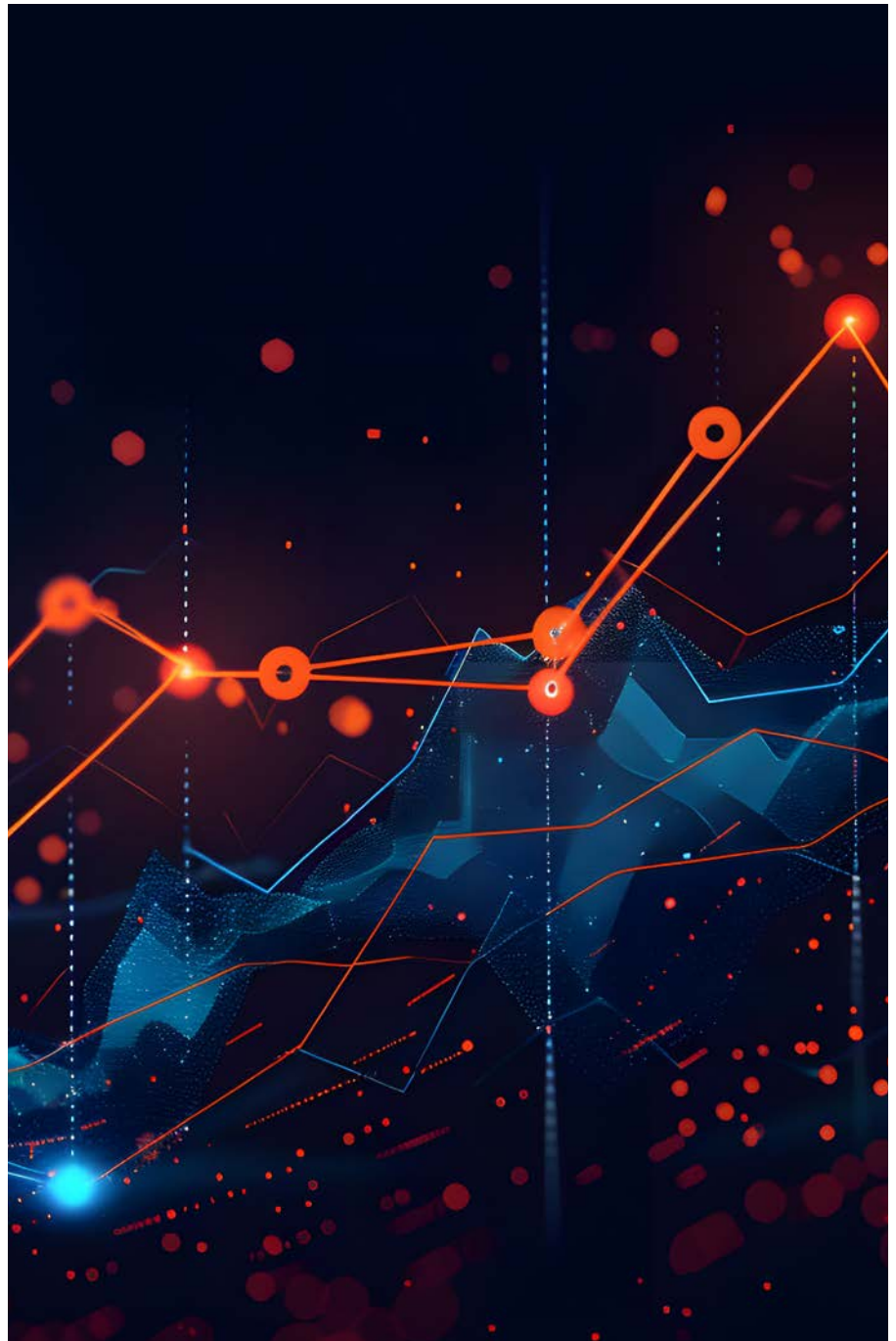


Bat House Delivery to Gravity Site

Communicating and tracking our progress

Aligned to the governance framework and planning agreements, we are working with our supply chain to ensure clear communication and reporting against our identified metrics. For this reporting period (Q1 2022 to Q2 2023) progress has focussed on ground remediation and preparation across the site, and we report on associated skills and training opportunities in the Employment and Skills Section. Information about natural resources impacts are in Natural Resources section. As construction work gathers pace during 2024, additional metrics will become available.

As the project has evolved, we have similarly evolved our reporting and monitoring, and introduced an additional theme – Employment and Skills. This theme will report on some of the aspects that were previously included in the Wellbeing and Inclusivity theme and focus on the skills, training, supply chain and employment opportunities offered during the reporting period.



Wellbeing and Inclusivity

Community, the work-life blend and fair access to opportunities for all are central to the Gravity Wellbeing and Inclusivity theme. With a key focus on opportunities for those in the UK's South West region, we have developed strong local partnerships and collaboration with a range of community and business organisations and are proud to have delivered a range of wellbeing and inclusion opportunities.

Over the reporting period, we have supported and participated in a wide range of events and awards activities across the region aligned to the objectives of our Clean and Inclusive Growth Strategy. This theme now focusses on activities relating to supporting communities and businesses in the region. Initiatives specifically relating to employment and skills for individuals are found in the later section although there is some overlap where activities deliver benefits across our themes.

The following pages provide an overview of these community and business activities during the 2022 to 2023 reporting period.



Launch of Gravity Sphero STEM initiative

Community initiatives

Providing for the social needs of the local community is a key aim for Gravity, integrating access, opportunities, and wellbeing. Over the period we have supported a range of events and initiatives for local groups and organisations. Community initiatives include:

Zipwire for village assault course



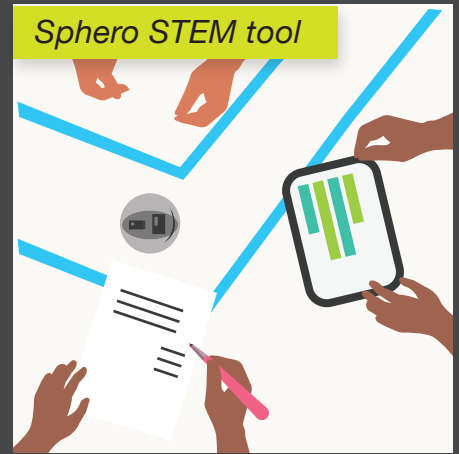
Bat House Delivery



37 Club



Sphero STEM tool



Puriton Park Playground



After School Clubs



Heritage Community Event



Quiet Room at the Sports Centre



Business Initiatives

During the reporting period, we have been involved in a range of business initiatives, including judging regional business awards on a yearly basis, speaking on panels and podcasts. We've also expanded our outreach activities by visiting businesses and sites relevant to Gravity's future as a technology hub.

Alongside the employment opportunities, Gravity also has consent to deliver up to 750 homes, in response to workforce requirements at the campus. Delivery of these homes will help to provide a local supply of safe, high quality living environments.

“

Gravity is 616 acres of brownfield land - brownfield being very important because brownfield regeneration goes straight to the very heart of net-zero carbon, sustainability, and clean growth.”

Paul Lowndes, Digital Somerset podcast episode



Regional Environmental Awards



Initiatives Roadmap

Community, Business, Careers and Education

**FEBRUARY
2022**

EVENT



'Developing Gigafactories': supporting Britain's Net-zero Ambitions

Claire Pearce spoke at the event which brought together several leading UK organisations driving forward transport decarbonisation, electric vehicle manufacturing and the development of large-scale battery manufacturing.



**FEBRUARY
2022**

EVENT



Cornish & British Lithium facility visit

Gravity visited the facilities and processes of Cornish & British Lithium. The trip was facilitated by the Heart of the South West LEP. Work to develop an ethical, sustainable lithium supply is rapidly accelerating and such efforts have already received backing from the Cornwall and Isles of Scilly Local Enterprise Partnership via the UK Government's Getting Building Fund, and from Innovate UK.



**FEBRUARY
2022**

AWARDS



Regional Environmental Awards

Paul Lowndes judged entries to both the Somerset Business Awards 2022 'Environmental Achievement Award' and the 'Federation of Small Business (FSB) South West's 'Environmental/Sustainability Award'.



**MARCH
2022**

AWARDS & EVENT



Somerset Business Awards

Talick Group Ltd was awarded Environmental Achievement Award. Paul Lowndes judged the awards for the second year.



Gravity Link Road and Green Bridge open to the public

Gravity's connection to the UK's motorway network, the Gravity Link Road, opened to the public. The Green Bridge features a footpath for people and local wildlife.



2022

Tags:

- Community
- Business
- Awards
- Awards Presentation/ Judging/Nomination
- STEM
- Partnership
- Awards Win
- Sponsorship/Funding
- Launch
- Panelist

**MAY
2022**

AWARDS



Chartered Institution of Highways & Transportation South West Awards

Stantec won the Innovation Award for the Gravity Local Development Order 'Future Scenarios Tool' - aiding transport planning and assessment, and the Collaboration Award for Gravity LDO Delivery Group.



**JUNE
2022**

EVENTS



South West Business Council Annual Dinner

Salamanca Group and Gravity Board Director, Lord David Triesman was the keynote speaker, speaking about Leadership in a Dynamic Region for Business, collaboration, and entrepreneurship.



Association of Women in Property

Claire Pearce was a guest speaker, emphasising the importance of hosting future-facing industries to create sustained employment for communities and developing greater regional multi-modal connectivity to better enable to South West to compete in an international market.



**JUNE
2022**

AWARDS



ICE South West Civil Engineering Award nomination

Gravity Link Road was nominated for this award. The completed road shows a commitment to sustainability, climate resilience and carbon reduction. The road has removed through traffic from Puriton, creating a safer village, a more pleasant public environment, and improving air quality.



**OCTOBER
2022**

EVENT



Launch of Gravity Sphero STEM initiative

Gravity partnered with Bridgwater United FC and Community Sports Trust to develop 'Gravity Sphero' which uses Sphero Sports Robots, an innovative STEM education tool.



Initiatives Roadmap

Community, Business, Careers & Education

**NOVEMBER
2022**

EVENT



Western Gateway Development Conference

Claire Pearce chaired the Regeneration and Investment showcase session, outlining large scale regeneration projects across the Western Gateway and wider region, challenges, opportunities, and lessons learnt from progress so far.



**DECEMBER
2022**

AWARDS



ICE South West Civil Engineering Awards

Gravity Link Road won New Build Project over £8 million category. The awards showcase collective and individual achievements of civil engineering in the region. The scheme was designed in partnership with Stantec, Alun Griffiths and The Richards Partnership.



**FEBRUARY
2023**

EVENT



75th Anniversary Twinning of Bristol with Bordeaux

Claire Pearce attended the first trade delegation visit to Bristol by Bordeaux officials with the aim of sharing learning on climate change and clean growth; to strengthen existing ties between the two universities, and explore future collaboration around trade, investment, and community links. An MoU was signed between the University of Bristol and the University of Bordeaux.



**FEBRUARY
2023**

EVENT



Business Desk: What lies ahead for the South West's Economy

Claire Pearce joined the panel discussion, about what sets the South West apart, business prosperity, challenges faced with talent attraction, and investment. The panel consisted of representatives from Western Gateway, Saffery Champness, Womble Dickinson Bond, and Marsh Commercial.



2023

Tags:

- Community
- Business
- Awards
- Awards Presentation/ Judging/Nomination
- STEM
- Partnership
- Awards Win
- Sponsorship/Funding
- Launch
- Panelist

FEBRUARY 2023

EVENT



Bat House delivery to Gravity site

Claire Pearce facilitated a new Bat House which was built in partnership with Bridgwater & Taunton College (BTC) and our Ecology Clerk of Works, Ecology Solutions. BTC students on Construction programmes at the Taunton campus constructed the Bat House and their Welding students on a Welding Scholarship manufactured the steel frame to make it transportable and mobile. The Bat House will provide a safe and secure habitat for the bats.



FEBRUARY 2023

EVENT



Digital Somerset podcast

Paul Lowndes was the podcast guest, discussing how digital technologies are enabling Gravity to accurately monitor its sustainability journey. This includes imported recycled stone from National Grid T-pylon sites and the LiDAR drone scans of the site for stone placement; digital connectivity, through resilient Dark Fibre supply and the recent 5G Logistics test bed directly connecting Gravity to Bristol Port.



MARCH 2023

AWARDS



Federation Small Business Awards

Feritech was awarded Sustainability Award - the company takes a radical approach to environmental sustainability in its new £3m purpose-built facility including rainwater harvesting, solar roof and battery storage, air source heat pumps, tree planting and many other initiatives. Gravity sponsored and judged awards for second year in a row.



MARCH 2023

EVENT



Puriton Park Playground open to the public

Gravity worked with Sedgemoor District Council to fund the delivery of a new and improved local play area for Puriton Park, consisting of a play tower and slide, trampoline suitable for all abilities and accommodates a wheelchair. Sustainably sourced materials for the playground were a priority, with dark teal panels and posts made from 100% post-consumer ocean recycled waste and recycled textiles.



Initiatives Roadmap

Community, Business, Careers & Education

**MARCH
2023**

EVENT & AWARDS



Great South West Partnership events

Gravity signed up to a 6-month series of local launch events across Cornwall, Devon, Somerset and Dorset to share the Great South West’s emerging ambitions and priorities for the region.



Somerset Business Awards

Paul Lowndes judged the ‘Environmental Achievement Award’ for the third year in a row and awarded it to PVA Hygiene for its innovative and sustainable cleaning products impact towards net-zero efforts.



**MAY
2023**

AWARDS



Royal Town Planning Institute (RTPI) South West Awards

Gravity Green Bridge was shortlisted for the ‘Best Project’ award at that the RTPI South West Awards for Planning Excellence 2023. The wider Gravity team included Stantec, The Richards Partnership, LDA Design, Ecology Solutions and Alun Griffiths Contractors.



**JUNE
2023**

EVENT & AWARDS



Bridgwater Business Expo

Gravity sponsored the event to connect customers and partners, showcase local products, and create business opportunities. They also funded workshops and seminars on digital marketing, international trade, cybersecurity, and sustainable business practices.



Planning Awards

Gravity received Highly Commended commendations for the ‘LDO: Planning Permission of the Year Award’ and the ‘Promoting Economic Growth Award’ for their planning application design and successful adoption of the Gravity LDO.



**AUGUST
2023**

EVENT



Festival of Economics with Bristol Ideas

Claire Pearce was on a panel with Dr Chris Colvin, expert on economic history and the interwar economy; Barra Mac Ruairi, Chief Property Officer, University of Bristol; Zoe Metcalfe, Client Director, AtkinsRealis, and Co-Founder, Ethos Wilder; and Ed Conway, Economics and Data Editor, Sky News.

Discussions focused on infrastructure needs of Bristol and South West, funding and government priorities, including transport links, digital networks or building communities.



Tags:

- Community
- Business
- Awards
- Awards Presentation/ Judging/Nomination
- STEM
- Partnership
- Awards Win
- Sponsorship/Funding
- Launch
- Panelist

AUGUST 2023

EVENT



Gravity Zipwire opens

Gravity supported Puriton Parish Council in the funding of a brand new zip wire for new village assault course, which is sustainably built, wooden, with a variety of organic and challenging obstacles.



NOVEMBER 2023*

EVENT



Insider 'Future of Somerset' breakfast event

Claire Pearce joined a panel with Karl Tucker, chair of Great South West; Andy Berry, chair of Bridgwater and Taunton College; Andrew Cockcroft, senior manager of stakeholder relations at EDF Energy; Mickey Green, executive director of climate and place at Somerset Council; and Jane Bentley, director of Jasun Envirocare. The event explored Hinkley Point C and Gravity projects and future economic development opportunities.



NOVEMBER 2023*

AWARD



Bridgwater Chamber of Commerce Business Awards

Gravity sponsored the awards, and Paul Lowndes judged the New Business Awards - with the winner being Dryad Gin.



DECEMBER 2023*

EVENT



Heritage Community Event celebrating Royal Ordnance Factory

Supported by the South West Heritage Trust and Somerset Film, Gravity hosted an event to share memories of Royal Ordnance Factory (ROF37). Held at the 37 Club and attended by local historians, members of the community, and former ROF37 employees, it featured a short talk about archival and other material, artefacts, and memorabilia, and the first showing of a short film about ROF37.



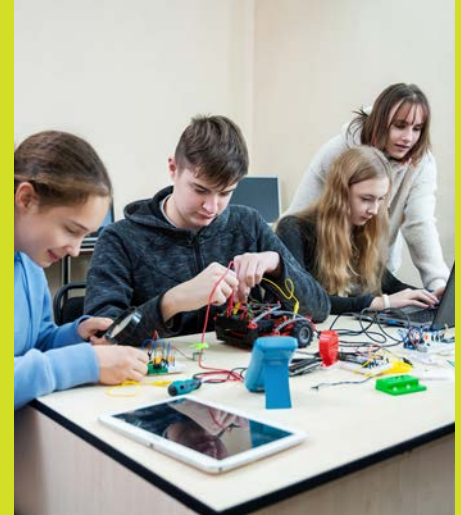
* These 3 items are beyond the reporting period for this report.

Employment and Skills

Aligned with our new theme, we focus on employment and skills for individuals. We engage with education providers to support their offerings, create procurement opportunities for local and regional businesses, and provide work and reskilling opportunities. We report on our progress throughout the reporting period.

Careers and Education

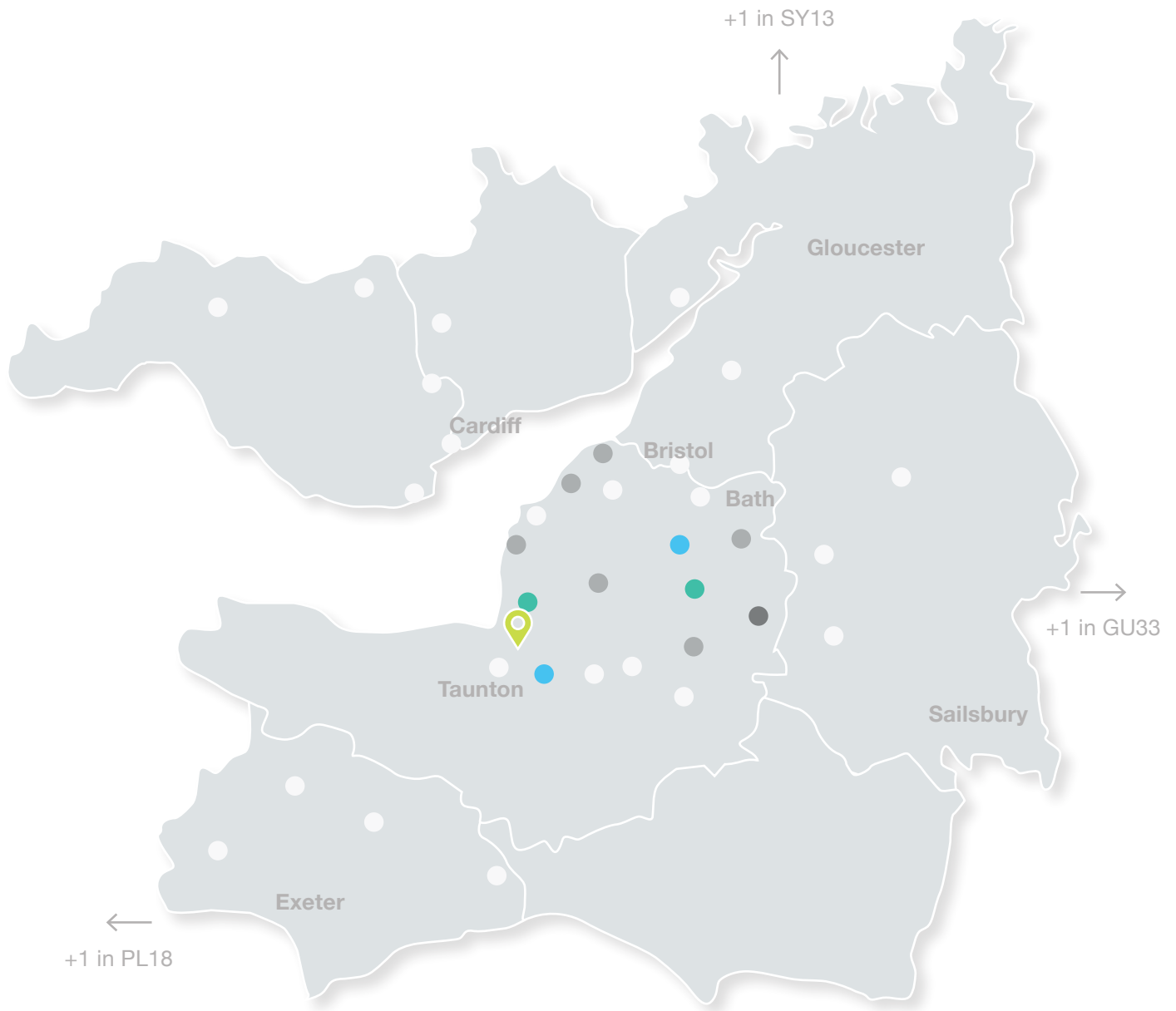
To enhance the longer-term skills landscape, initiatives within this theme also include deepened partnerships with local and regional universities and colleges, evolved partnerships with local schools, and worked with partners to launch and support local STEM initiatives. Our Roadmap on pages 12-17 provides a summary of our activity during 2022 and 2023.



Procurement Opportunities

The Gravity Business Charter sets out a commitment to local business engagement, partnership and collaboration through the planning, construction, and implementation phases. During 2022 and 2023, a range of local and regional businesses have been engaged to provide services. This includes businesses delivering key construction phase roles, such as Principal Designer and Principal Contractor, and for planning and design services.





Key: Gravity | Worker count: 1 2 3 4 5-9

Employment

During the period, preparatory construction work has progressed on site. In line with the Skills Charter, employment opportunities are offered to those from local communities, with a significant proportion of the 2022 to 2023 workforce being based in the former Sedgemoor District and wider Somerset.

As the project progresses, Gravity will support supply chain companies to create, manage and monitor Employment and Skills Plans which align to the Skills Charter, and which will in turn be monitored and reported to the ESG Governance Group.

Skills and Training

Skills opportunities for those working on site include the ability to undertake training courses, providing those who come to work at Gravity with up-to-date skills and training to support their future career routes, in

many cases ensuring they are upskilled, broadening their opportunities to accessing higher-value job opportunities, and enhancing quality of life. A total of 176 training courses have been completed.





First Aid At Work




Asbestos Awareness




MEP Energy Isolation




Abrasive Wheels



Site Supervisor Behavioural Change



Stalled Crusher Training




Fire Safety




Mental Health



Environmental Training




Accident Investigation Training




COSHH



Geotechnical Awareness



CAT & GENNY




Manual Handling

Natural Resources

The focus of Gravity towards its natural resources follows a '4R' approach focusing on Recover, Recycle, Repurpose, and Reuse of materials. Gravity is also conscious of how its actions can impact greenhouse gas emissions, biodiversity, and pollution.

The site remediation phase is on target to achieve its goal of zero waste to landfill. Exceptions may occur to this when materials are discovered which are hazardous, and in such cases a full audit trail will be available through the agreed and approved remediation strategy which is place on site.

As part of the remediation strategy, all asphalt surfacing could be sustainably re-used as a construction material within future site roads. As part of the excavation works, localised former roadways were excavated, with materials

segregated and stockpiled to mitigate the potential for cross contamination of clean areas of the site. This included the creation of a dedicated storage area, on impermeable hardstanding in the Marshalling Yard. This approach will be taken forward with any future identification of roadways and paths containing coal tars.

During the reporting period, quantities of materials have been monitored – the summary overleaf provides an overview of progress during remediation works on site between 2018 and Q3 2023.

Responsible water use

Managing water consumption is crucial, and we have established a site-wide sustainable water management system.



Nature and Biodiversity

Gravity is committed to achieve a biodiversity net gain of 10% on site. Governed by a Strategic Landscape Parameter Plan, the design will retain and improve habitats and ecological features through management of existing green and blue infrastructure, and the careful siting of new green and blue spaces.

Working with Ecology Solutions we have progressed licensing and management for native animal species. The Ecological Clerk of Works is responsible for monitoring the appropriate relocation of badger sets, and management of water voles.

In collaboration with Natural England and Somerset Council, business rate incomes will be ringfenced to support the nearby Avalon Marshes Nature Reserve, supported by Gravity's designation as an Enterprise Zone.



Materials reclaimed, reused and recycled onsite

<p>Copper 96 metric ton/m³</p> <p>from lead sheath cables</p>	<p>Lead 75 metric ton/m³</p> <p>from lead sheath cables</p>	<p>Heavy steel / iron 451 metric ton/m³</p> <p>from railway lines, concrete processing, and general site clearance</p>
<p>Unprocessed Copper 91 metric ton/m³</p> <p>from railway lines, concrete processing, and general site clearance</p>	<p>Coal tar 3,000 metric ton/m³</p> <p>from road and walkways on the former ROF site</p>	<p>Wood 200 metric ton/m³</p> <p>from non-deciduous and diseased or dead trees</p>

4R Strategy

Recover, Recycle, Repurpose, and Reuse and working towards zero avoidable waste by 2030. Gravity has a zero waste approach to all materials and waste products on the site.

The diagram illustrates the 4R Materials Model as a vertical progression. At the bottom is the 'Linear Economy' with a right-pointing arrow icon labeled 'Recover'. Above it is 'Recycle' with a circular arrow icon. Next is 'Repurpose' with a circular arrow icon. At the top is 'Reuse' with a right-pointing arrow icon. A vertical green arrow on the left points upwards, labeled 'Increasing Circularity', with 'Circular Economy' at the top and 'Linear Economy' at the bottom.

Carbon Emissions Avoided

Potential total emissions, without implementing Gravity sustainable approaches. Through sustainable approaches, and methods including: reduced waste to landfill & vehicular movements on public roads; sustainable and risk-based principles via the CL:AIRE DoWCoP, achieving near zero waste.

36,803,301
tCO₂e

By utilising alternative construction approaches, Gravity avoided the use of 147,269 tonnes of virgin materials

Carbon Emissions Emitted

<p>Mass excavation of materials 169,154 tCO₂e</p>	<p>Movement of materials 774,265 tCO₂e</p>	<p>Material screening 54,595 tCO₂e</p>
<p>Material reuse 488,100 tCO₂e</p>	<p>Thermal treatment of materials 291,979 tCO₂e</p>	<p>Imported topsoil 1,762,385 tCO₂e</p>
<p>Imported limestone 6F5 Imported processed concrete Imported processed cementitious material 8,042,692 tCO₂e</p>	<p>Disposal of materials 26,671 tCO₂e</p>	<p>Natural emissions from soils 2,849.911 tCO₂e</p>
Total Emissions =		11,716,255 tCO ₂ e

Water

Maximising the use of water

Site works are using sustainable water management systems to avoid contamination of water sources, or removal of water which can be reused on site.

Waste

Site Remediation - zero waste to landfill:

100% of waste diverted from landfill (excavation and demolition)

Clean Energy

Gravity's energy strategy provides national scale power infrastructure to enable energy intensive activities to be based at the area of the site identified for energy infrastructure within the LDO parameters plans.

Through a dedicated 'Energy Distribution and Management Infrastructure' location on site, with our delivery partner National Grid, connection will be provided to the national power infrastructure, alongside providing on site renewable and low carbon energy options and provision of energy management for building premises.





Gravity has an Energy Distribution and Management Infrastructure location on site

Clean Transport

Striving to minimise transport impacts on the strategic and local road network is a key aim for Gravity. During 2022 and 2023, activity mainly focussed on site remediation. A majority of the workforce carrying out these activities are based locally, within Somerset, or the immediate surrounding regions.

Additionally, as described in the section on Natural Resources, the transportation of materials both on and off site has been minimised through the design and monitoring of our 4Rs strategy.

As the project evolves, a range of design measures will be delivered, to support sustainable transport to and from site, and across the campus itself. A site-wide micro mobility grid will provide routes and spaces across the site entwined with the green infrastructure network, creating safe and appealing ways to travel around the site, for both employment and recreation.

To facilitate travel to and from site using sustainable and active means, both infrastructure and transportation improvements will be completed. From improved bus services and local active travel routes to an increase in access to passenger and freight services, Gravity will support the shift away from private and individual car journeys.



Artists impression of Gravity
Campus entry

Digital Revolution

Central to the aims of Gravity is accelerating progress towards achieving a net-zero carbon economy. We are committed to providing high performing digital infrastructure and upskilling the local workforce to embrace the opportunities of the digital economy.

Work is underway to implement digital technologies such as internet connected sensors to monitor traffic, air quality and noise. Associated web-based dashboards are being developed which will help the project team to proactively analyse, manage and ensure compliance with planning requirements as the development progresses. These digital investments will significantly improve data collection and analysis workflows, allowing for a deep understanding of the positive impact on the local economy, skills, and investments.



Summary

This report has set out Gravity's progress against six priority investment areas aligned to our ESG policy: Wellbeing and Inclusivity, Clean Energy, Natural Resources, Clean Transport, Employment and Skills, and Digital Revolution. The reporting period covers 2022 to August 2023.





View from the access road connecting into Gravity

This Sustainability Report covers our new approach of measuring our impact, which will be continued through our future reporting. We will also focus on using the UN SDGs as guiding principles and assess any additional areas as we continue this journey of embedding sustainability throughout our development as a site.

Following the arrival of Agratas as the first occupier in August 2023, elements of sustainability governance, reporting and monitoring has transitioned to Agratas as the design and build of the gigafactory progresses. Future reporting will be made available by both Gravity and Agratas as we move forward with delivering this landmark project, the site expands to welcome more occupiers, and the delivery of jointly managed infrastructure comes forward.

Gravity

