

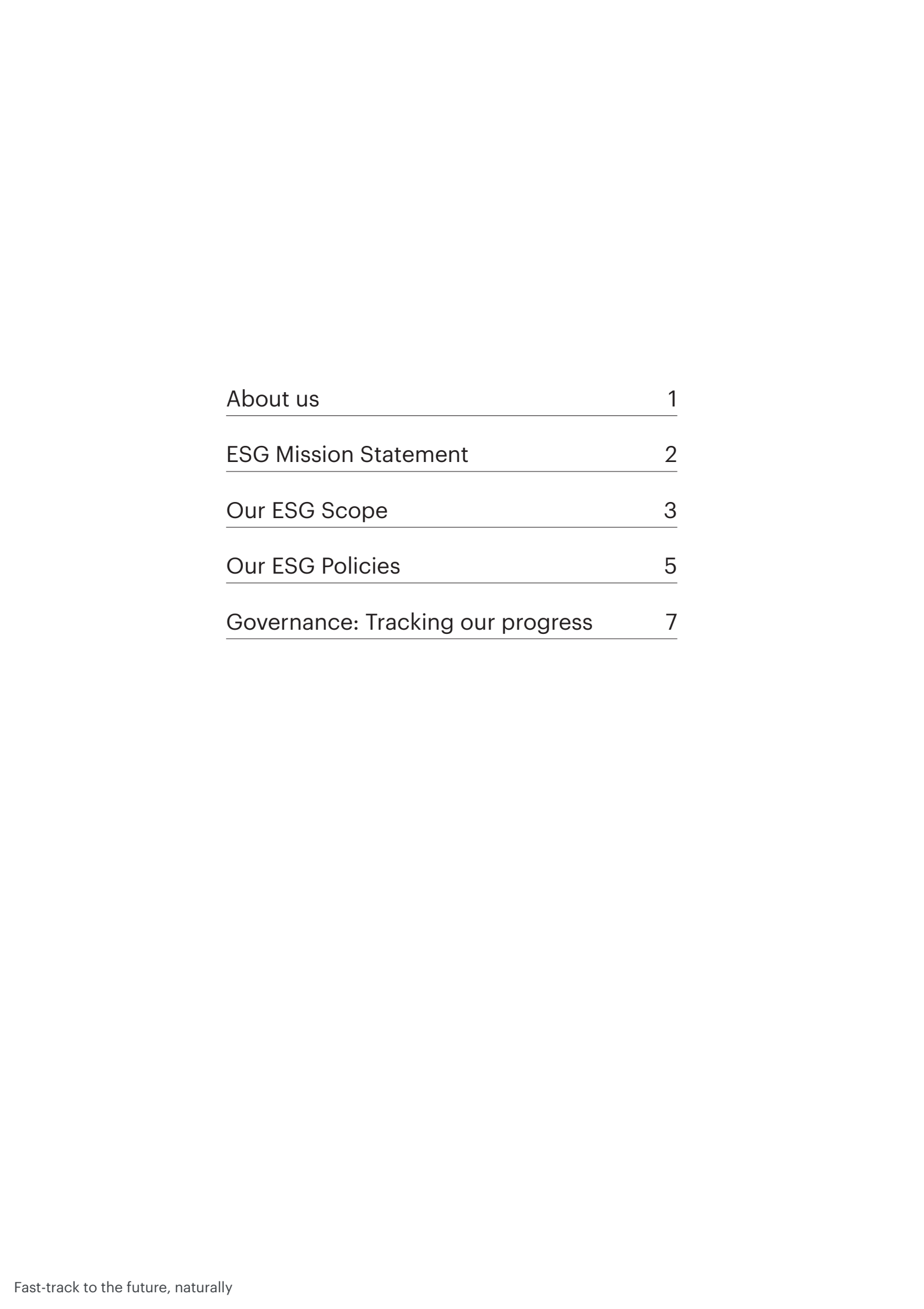


# Gravity

Environmental, Social & Governance

Fast-track to the future, naturally

[thisisgravity.co.uk](https://thisisgravity.co.uk)



# About us

About us	1
ESG Mission Statement	2
Our ESG Scope	3
Our ESG Policies	5
Governance: Tracking our progress	7

This is Gravity Ltd, known as ‘Gravity’, is the UK’s first commercial smart campus, creating a blueprint for a smarter, cleaner future - faster. It will deliver a new era of possibility by supporting companies making a difference socially, economically and environmentally, driving the UK’s shift to growing through a cleaner economy.

Gravity as a company, has crafted an Environmental and Social Governance (ESG) policy to set out our corporate commitments, and guide the business and its activities as whole.

The ESG is particularly important in respect of guiding the development and implementation strategy through This is Gravity Ltd, and directing action through our wider team and consultants, and to the community.

Gravity as a development project, will have a transparent approach to ESG and action, that will inform delivery and reporting to communicate progress.

The main Gravity site, with direct access to the M5 at Junction 23, and accessible by rail, air and sea, offers more than 616 acres for the creation of a scalable, flexible and shared working space within a live-work-play campus, framed by a high quality natural environment.

With its on-site water provision, renewable and low carbon energy infrastructure and energy management solutions, dark fibre, excellent connectivity, accessible talent pool and knowledge economy including four top-tier universities and a high performing college close by, Gravity provides occupiers with the ability to invest, transform and create a new era of green jobs as part of a 4th Industrial Revolution.

Gravity is at the heart the UK Industrial Strategy to realise Clean Growth and is committed to creating jobs and driving out socio-economic outcomes to create social value and long lasting environmental benefits to communities.

Our ESG Policy defines our process towards fast-tracking the future, naturally and provides the scope for action.

# ESG Mission Statement

## Our mission

To create decent work and inclusive economic growth in conjunction with climate action, whilst contributing to the broader suite of UN Sustainable Development Goals.

## Our journey

Our approach is to nurture low carbon innovation, processes and systems within the development to enable future occupants and communities to share our aspirations. We will do this by maximising the social, economic and environmental benefits of the transition to a zero carbon economy.

We are on a journey to make this happen and quickly. Our mission will continue to drive positive environmental and social outcomes.

# Our ESG Scope

We have prioritised our environment, social and governance policy against the clean and inclusive growth that Gravity will deliver and where the greatest societal impact can be made.

Our process of prioritisation has been informed by assessing impact and benefits Gravity will provide people and the environment across our value chain.

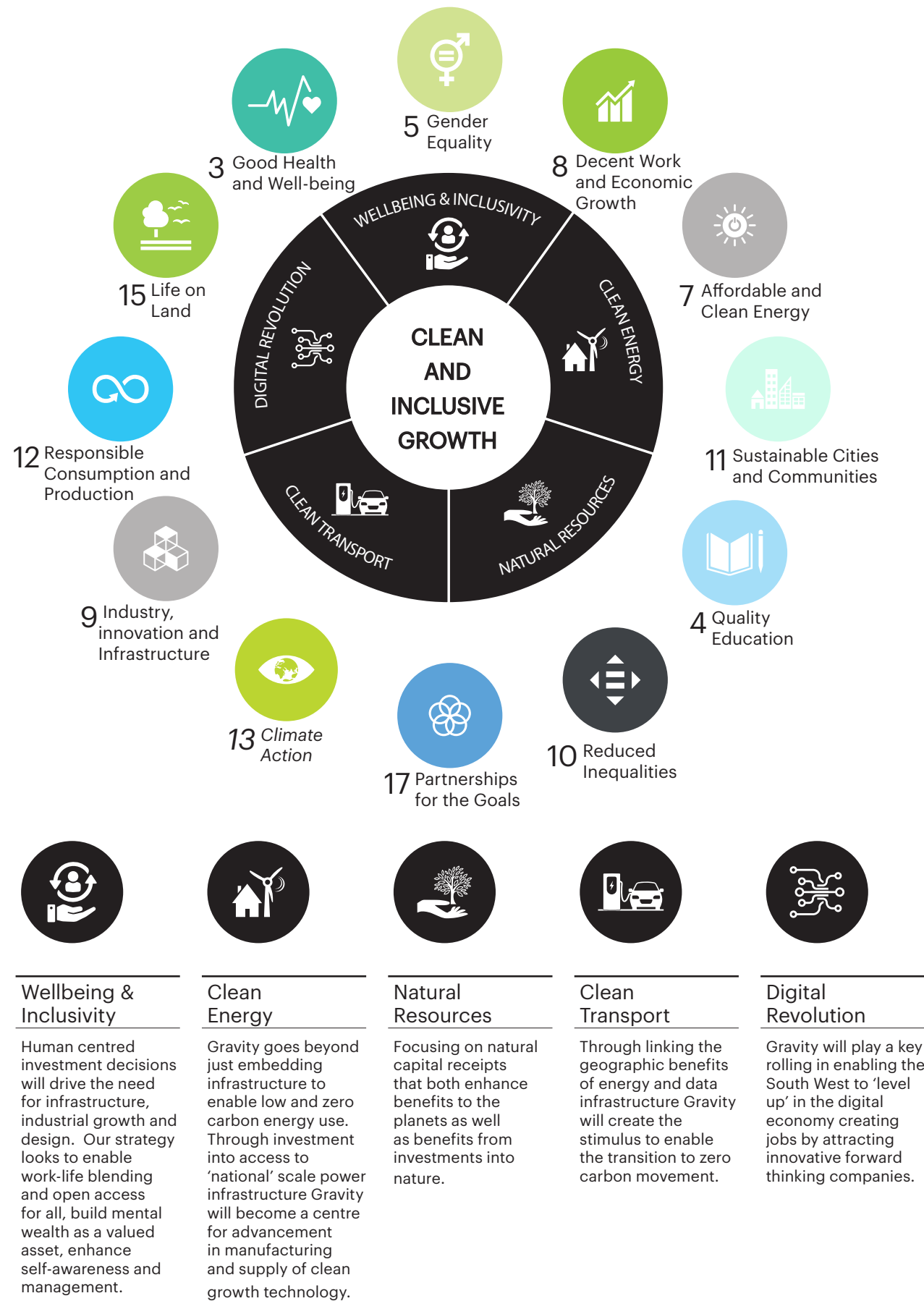
Using the United Nations Sustainable Development Goals (UN SDG's) as a framework, we have identified 12 primary goals that we believe the planning and development process will have an influence over.

Our ESG scope looks to drive best practice in actioning, measuring, monitoring and verification against these 12 UN SDG goals.

Furthermore, we have expressed within our Clean and Inclusive Growth Strategy, our five priority investment areas:

- + Wellbeing and Inclusivity;
- + Clean Energy
- + Clean Transport;
- + Digital; and
- + Natural Resources

Our ESG policies are interlinked with the Clean and Inclusive Growth Strategy accordingly, which shapes our approach realising our vision and ambition on the ground.



# Our ESG Policies

Our process is defined by a set of ESG policies that steer investment into clean and inclusive growth. The policies have been developed to underpin a range of strategies that will deliver Gravity through planning, construction and onto operation of a world class facility.

## Environment Policies

- + Greenhouse Gas Emissions: Gravity will help to deliver the Government's Net Zero Carbon agenda by planning and delivering the infrastructure and economic conditions to enable clean growth
- + Biodiversity: Gravity will invest in and deliver a biodiversity strategy that will assist and enable an increase in the natural capital of the Avalon super reserve
- + Pollution prevention: Gravity will maximise economic value out of degraded brownfield land without environmental detriment
- + Embrace and demonstrate the 4 R's: Deliver a comprehensive reduce, reuse, recover and recycle strategy from the construction platform through to operation of the campus

- + positively engaging young people
- + Skills & Education: Gravity will support local school engagement, apprenticeships and sponsorship with our supply chain
- + A Skills Charter for Local employment: Gravity will ensure long term opportunities for local employment including leverage new skills opportunities including green collared jobs within Sedgemoor District
- + Social Investment: Gravity will consider mechanisms to direct and secure social value

## Governance Policies

- + Local Development Order: will be the route to ensure that Clean and Inclusive Growth will be measured and monitored through the planning process
- + Digital masterplan: will underpin gathering data to prove our successful outcomes against our ESG commitments.
- + United Nations Sustainable Development Goals: Gravity will benchmark and report against our 12 identified goals
- + Independent verification: we will use industry benchmarking such as BREEAM Infrastructure, WELL Standard and publicly available standards such as PAS 2080 Carbon Management in Infrastructure to verify our actions

## Social Policies

- + Social Value Monitoring: Gravity will define success through clear social value metrics which we will share with the local community. This will include identifying metrics to include for example, inspiring new career opportunities, identifying skills needs for new occupiers, strengthening community resilience and



# ESG Policies

Our Supply Chain Charter will measure, monitor and enable verification of our identified metrics.



# Governance: Tracking our Progress

Measuring and verification of clean growth will support our journey. We have established a reporting framework which will be used to guide the implementation of our ESG Policy and allow report against our commitments to the UN Sustainable Development Goals.

This will be underpinned through the Local Development Order and through our supply chain engagement.

This is the start of our journey to supporting and delivering a sustainable future for the communities we work with.

Gravity is committed to sharing its journey, and we will work with key stakeholders to build SDG awareness and share knowledge and expertise. Importantly our supply chain will be required to share our journey through appointment.

Our success will be tracked digitally by mapping the LDO process to our missions and priorities. This will allow us to record and verify our actions and commitments made through to occupation.

An annual report will be published to communicate progress.

